

Want Orange-  
Holden-Gatlin  
Intersection Fixed?  
**SPEAK  
UP NOW**  
BEFORE IT IS  
TOO LATE.



If you want the Orange-Holden-Gatlin intersection fixed, please attend Orange County's Study Analysis Public Meeting Tuesday March 1st.

This could be our last chance for a real fix. No more "band aid" fixes that "kick the can down the road" for decades more by county and city officials.

**WHAT**

Orange County's Orange-Holden-Gatlin Intersection Analysis Study Public Meeting

**WHEN**

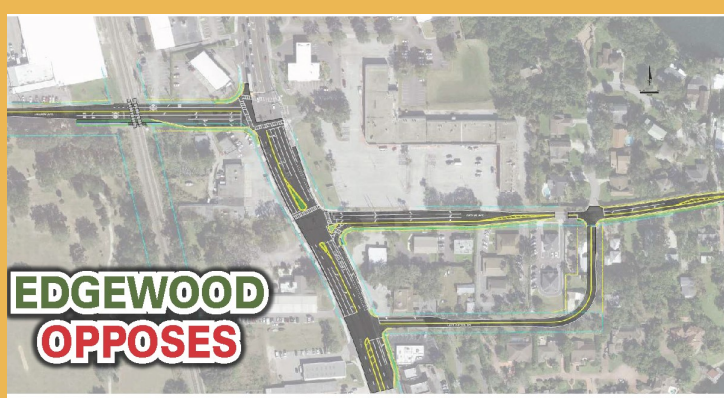
March 1, 2022; 6-7pm

**WHERE**

Oak Ridge High School Auditorium, 700 W Oak Ridge Rd.



COUNTY ALTERNATIVE 1  
EDGEWOOD SUPPORTS



COUNTY ALTERNATIVE 3  
EDGEWOOD OPPOSES

**FAQ**

**Frequently Asked Questions**

**What's the issue?**

The Holden/Orange and Gatlin/Orange intersections create bottlenecks for free flow traffic. Traffic backs up in all directions. The situation will only worsen when Holden connects with John Young Pkwy in the near future. Over the years, small "band-aid" improvements have done little to get traffic moving. The best and most efficient fix is to realign Holden with Gatlin, the same solution that was approved by the Orange County Commission back in 1988. By realigning Holden with Gatlin, the current Holden/Orange intersection would be eliminated. So instead of two 3-way intersections, there will be one 4-way intersection.

**Will the realignment help decrease cut-through traffic on Gatlin, Summerlin, Forrestal and the other neighborhood roads off Holden?**

Yes. Drivers tend to find the path of least congestion, which, in this case, has led to cut-through traffic on neighborhood streets due to backups caused by the offset intersections of Holden and Gatlin Avenues. The offset intersections aggravate the congestion on Orange Avenue, particularly at peak commuting times. Aligning Holden with Gatlin will increase the efficiency of these roads, decreasing the need for drivers to seek an inappropriate path through the neighborhoods.

**Has the County taken into consideration the right-of-way cost differential between the presented alternatives?**

No. The County's presented alternatives do not take right-of-way costs into account. In right-of-way costs alone, the Lake Gatlin Road alternative would be much more expensive than the park alternative.

**Does using park land for transportation improvement conflict with the County's comprehensive plan?**

No, such use of park land is supported when in the public interest, and has been done for at least two County road improvements: Conroy Windermere Road from Shadow Bay Park and Dean Road from Downey Park.

**Will the park still provide solitude and a place for gatherings and recreational activities?**

Yes. While the Holden Avenue realignment reduces the park by 4 acres, the same size park we've enjoyed for 30 years will continue to be available. Under the leadership of former County Commissioner Pete Clarke, the County purchased 9.66 acres off Jamaica Lane that, as he publicly stated, could be used to replace the acreage reduced by the realignment should a future Holden realignment become a possibility.



**Will the realignment through the park impact fewer property owners than the Lake Gatlin Road Alternative?**

Yes. The realignment through the park will affect no more than two private property owners and it will not displace any residents. However, for Alternative 3, land from at least 17 privately owned parcels, mostly residential properties, will need to be acquired for right-of-way for the Lake Gatlin Road extension to Gatlin Avenue. This alternative will also result in the displacement of multiple residents and businesses, increasing the costs dramatically.